

Castle Special Management Area

Legend Designated Summer and Winter Trails

- Public Land Use Zone
- Rocky Mountains Forest Reserve
- Designated Winter Trails
- Designated Summer Trails
- Hiking Trails
- 12 Trail Intersections
- P Staging Area/Parking
- P Staging Area/Parking
- P Hiking
- P Parking
- P Sustainable Resource Development Office
- S Cross-Country Ski Area
- P Picnic/Snowmobile Shelter
- ? Information Kiosk
- P Random Ride Areas
- ++ Trail Gates (Open December 1 to April 30)
- Private Land
- Parks & Protected Areas
- ▲ Fire Lookout
- ▲ Mountain
- * Pass
- Lakes/Rivers
- Rivers/Streams
- Access
- Roads-Paved
- Roads-Gravel
- Roads-Unimproved
- Townships

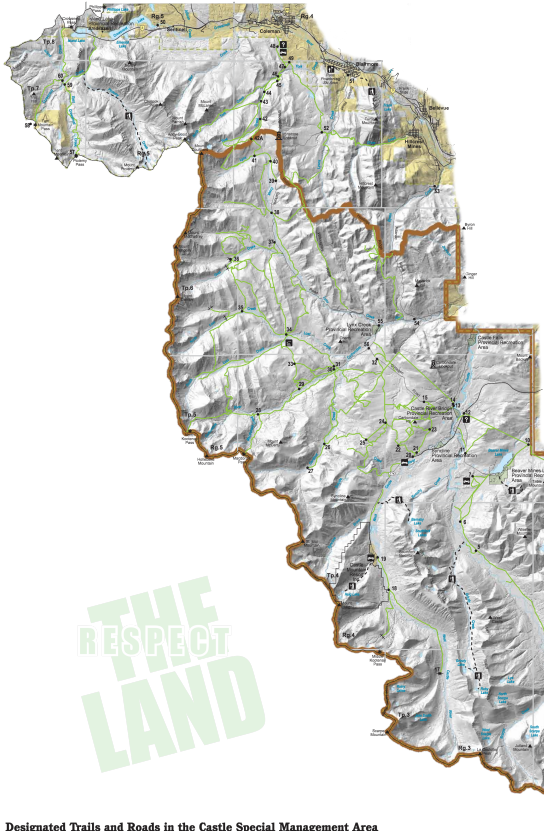


Map Data Provided by the Spatial Data Infrastructure Unit
 The information on this map is derived from the Government of Alberta, including the responsibility for interpretation as well as of all other Alberta Sustainable Resource Development, Recreation Services Area, Recreation Information Unit - Calgary, 2013

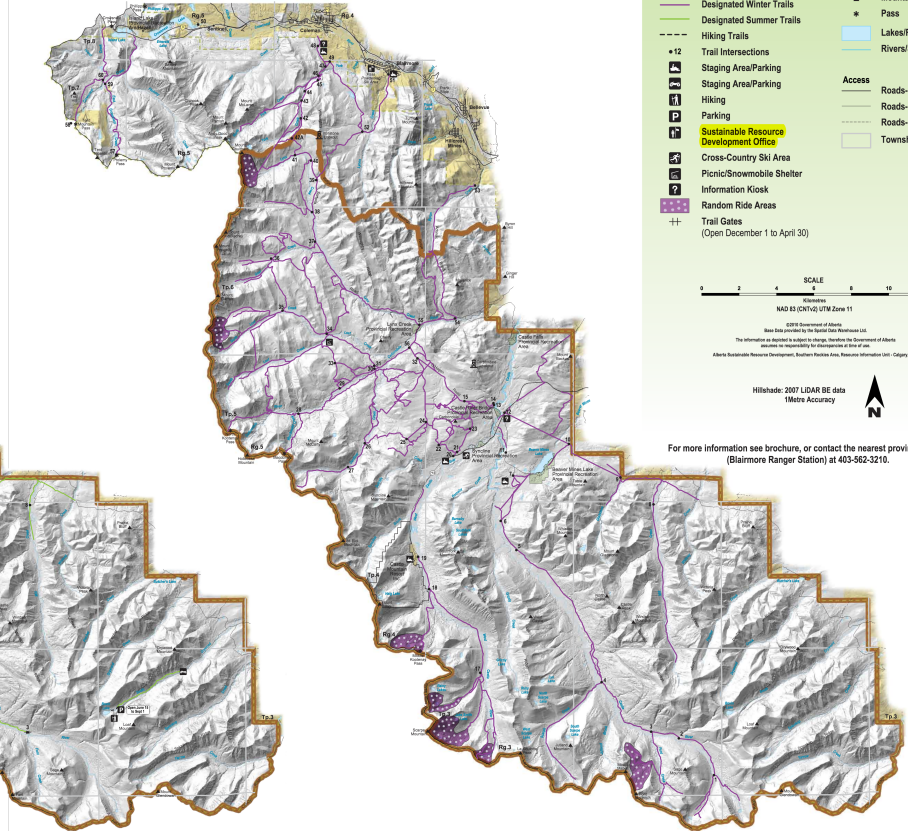
Hillshade: 2007 LIDAR BE data
 1 Metre Accuracy

For more information see brochure, or contact the nearest provincial office (Blairmore Ranger Station) at 403-562-3210.

Summer Trails



Winter Trails



THE LAND
RESPECT

Designated Trails and Roads in the Castle Special Management Area

Vehicle Description	Trail Sign	Map Symbol	Explanation	What Type of Motorized Vehicle Am I Driving				
				Truck	Side by Side	Quad	Motorcycle	Snow Vehicle
Trail Classification								
Designated Motorized Summer Trails		—	Open May 1 - Nov 30	✓	✓	✓	✓	✓
Designated Motorized Winter Trails		—	Open Dec 1 - Apr 30	X	X	X	X	✓
Road Classification								
On highway vehicles only are permitted on these roads.			Public Highways and Lanes of Occupation Roads	Only on-highway vehicles permitted.				

Note: Trail access may be amended, modified or closed by a Forest Officer in response to fires, fire hazard, flooding, wildlife or other environmental and safety concerns. Please ensure you have the current information on the area to which you are travelling and obey all posted signs and notices.

What is a Public Land Use Zone

A Public Land Use Zone (PLUZ) is an area of land to which legislative controls are applied under the authority of the *Public Lands Act* to assist in the management of industrial, commercial, and recreational activities. A PLUZ is created specifically to protect areas containing sensitive resources and manage land use activities.

The Castle Special Management Area has a designated trail system in effect which restricts motorized access to protect ecologically sensitive areas and wildlife from adverse affects of motorized use.

Summer Trails

Motorized vehicles are permitted on designated summer trails from May 1 to November 30 unless otherwise indicated on the map and/or signs posted in the area.

Winter Trails

Motorized snow vehicles are permitted on designated winter trails and within random stalling areas from December 1 to April 30 unless otherwise indicated on the map and/or signs posted.

Liability Disclaimer

This map is provided for information purposes and to advise you of many of the risks relating to trail use. Use of the trail system is entirely at your own risk. The trails have not been classified by degree of difficulty and little or no maintenance is done on these trails; rangers and rangers' aides may assist. The trail system can be difficult and physically challenging and conditions may change due to weather and other factors. For example, trails that may be easy to traverse under dry or frozen conditions may be hazardous and/or impassable under spring thaw or wet conditions. It is up to users of the trail system to learn the necessary skills for their safe enjoyment and to exercise caution in potentially hazardous areas.